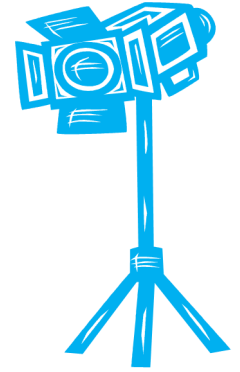




Ice Show 2022

Featured Performer Checklist

Show Dates are April 29, 30, and May 1, 2022



- _____ Skater must be registered in a Niles Skate School class, 2021 Fall, 2022 Winter, & 2022 Spring sessions.
- _____ Skater must be an ISI Member. Need membership info? Please see the Skating Director.
- _____ Skater must be tested and passed ISI Freestyle 1 unless they are taking part in the soloist raffle for skaters Pre Alpha—Delta. Tests must be submitted to the Skating Director by the last day of regular ice show registration. Need ISI testing info? Please see the Director.
- _____ Skater must compete in at least one solo event at the annual Niles IceLand Competition, the Sweetheart Open, to be held **February 12 and 13, 2022** as a representative of Niles IceLand.
- _____ Skaters and parents must each provide service hours for a minimum of 2 hours (4 hours total) at the 2022 Annual Sweetheart Open.
- _____ Skaters and parents must attend the featured performer informational meeting held on one of two dates. Thursday 10/7/21 at 6:45pm or Thursday 10/14/21 at 6:45pm. Meeting will be held through ZOOM. E-Mail Aforbes@niles -parks.org for the meeting link.
- _____ **Skaters must audition for a featured performer role . The audition will be in the form of an ISI interpretive event. Auditions will be Sunday 2-13-21 in the morning. Exact time TBD. There will be an \$11.50 audition fee. Skaters who were to be Featured Performer in 2020 do not have to audition for 2022.**
- _____ Featured Performers will be assigned a role in the show with music by the skating director based on the outcome of the auditions and ability level. Some roles may be split cast.
- _____ Featured Performers must provide and incur the expenses for their costumes. Costume must be approved by the director. Costumes may include theatrical make-up. Featured Performers and 1 parent must meet with the Director to receive directions at a prearranged meeting that performers must sign up for.
- _____ Featured Performer must participate in and incur the expenses for the opening and closing numbers of the ice show. The fee will include music, rehearsal time, choreography for both the opening and closing numbers, and the costume for opening number (featured performers wear their featured performer costume for closing number). Featured Performer choreography is not included in this cost.
- _____ Featured Performers must participate in and incur the expense for at least one additional group number besides opening and closing numbers. The fee will include rehearsal time, choreography, and the costume.
- _____ All skaters who intend to qualify as a 2022 ice show featured performer must sign and return a "Letter of Intent " by October 23, 2021. Role Request forms Must be Returned to the Skating Director no later than October 23, 2021.

A bit more info:

1. IceLand student teachers must abide by all of the above requirements.
2. IceLand coaches are always welcome to skate a solo if they are currently teaching in the Iceland Skating School Program, but they are not required to skate in the opening and closing numbers but may be encouraged to.
3. Guest soloists may be invited to skate in the annual ice show. They will not skate in the opening number, but will be recognized at the end of the closing number.
4. Ten skaters below the Freestyle 1 level will be chosen by raffle to receive solos/step out/small group specialty numbers in the 2022 annual ice show. With the exception of the level requirement, all other soloist requirements will apply to all raffle participant skaters. The raffle will be held after auditions take place. All raffle participants, whether or not they win a solo, duet, trio, or small group number are required to skate in the opening and closing production numbers and one additional group number. To participate in the raffle, skaters must sign up for these ice show numbers by the scheduled registration deadline.
5. Adult skaters are welcome to participate in our 2022 ice show. All above rules apply to adult skaters.